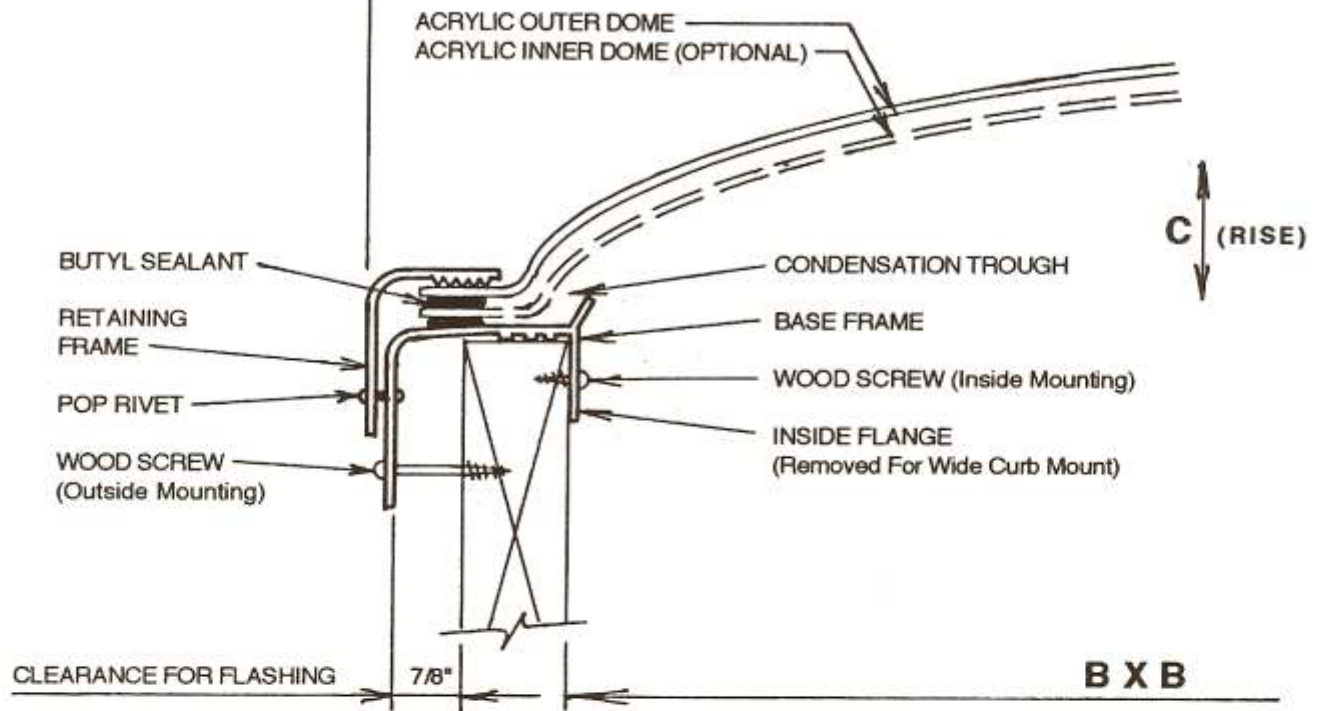


MODELS A & TT

A X A



SKYLITES SHALL BE PECOT FREELITE SKYLITES. DOMES SHALL BE FORMED FROM ONE PIECE, CAST ACRYLIC SHEET OF A THICKNESS TO MEET A 40 psf DESIGN LOAD. FRAMES SHALL BE EXTRUDED ALUMINUM ALLOY 6063T5 (BASE FRAME .078" RETAINING FRAME .060") WITH HELI-ARC WELDED CORNERS. A BUTYL GASKET SHALL JOIN THE DOME AND BASE FRAME, ALLOWING FOR THERMAL MOVEMENT, AND WITH A WEEP HOLE ARRANGEMENT. SKYLITES SHALL BE COMPLETELY FACTORY ASSEMBLED AND READY TO MOUNT ON CURBS.

QUAN	MODEL	A X A	B X B *	C
	- 2424	24 1/2 x 24 1/2	19 x 19	5
	- 2828	27 1/2 x 27 1/2	22 x 22	5
	- 3636	35 1/2 x 35 1/2	30 x 30	8
	- 4242	42 1/2 x 42 1/2	37 x 37	8
	- 4848	48 1/2 x 48 1/2	43 x 43	8
	- 5252	51 1/2 x 51 1/2	46 x 46	8
	- 6060	60 1/2 x 60 1/2	55 x 55	12
	- 8080	80 1/2 x 80 1/2	75 x 75	16
	- 9696	96 1/2 x 96 1/2	91 x 91	18
	- 2448	24 1/2 x 48 1/2	19 x 43	5
	- 2852	27 1/2 x 51 1/2	22 x 46	6
	- 3652	35 1/2 x 51 1/2	30 x 46	8
	- 3674	35 1/2 x 74 1/2	30 x 69	8
	- 3296	30 1/2 x 96 1/2	25 x 91	8
	- 4280	42 1/2 x 80 1/2	37 x 75	8
	- 4896	48 1/2 x 96 1/2	43 x 91	9
	- 5296	51 1/2 x 96 1/2	46 x 91	9
	- 6496	62 1/2 x 96 1/2	57 x 91	12

DOMES COLORS:

- OUTER:
 Transluscent Clear _____
- INNER:
 Transluscent Clear _____

ALUMINUM FINISH:

- Mill Clear Anodized Bronze Anodized

TYPE

MODEL

- Single Glazed - 1 1/2" Thick Curb "A"
 Double Glazed - 1 1/2" Thick Curb "TT"
 Single Glazed - Wide Curb "A-C"
 Double Glazed - Wide Curb "TT-C"

PECOT, INC.

P. O. BOX 470532
 TULSA, OKLAHOMA 74147

PROJECT: _____
 ARCHITECT: _____
 CONTRACTOR: _____
 DATE: _____ MODEL: _____

* Not Applicable To Wide Curb Mount